

Electrode Steam Humidifier

HyLine



IMPORTANT: READ AND SAVE THESE INSTRUCTIONS



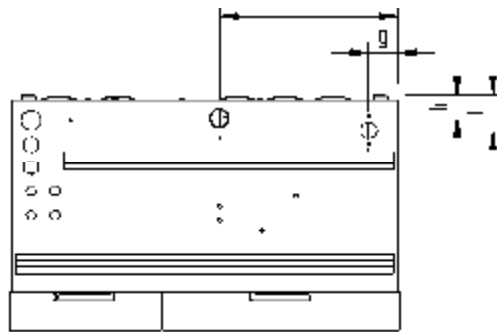
13. Technical Specification

Technical Specifications Steam Humidifier HyLine					
Type	HY05	HY08	HY13	HY17	HY23
Steam output [kg/h]	5	8	13	17	23
Power supply *	400V/3/N/50-60 Hz				
Power Usage [kW]	3,8	6,0	9,8	12,8	17,3
Input [A]	5,4	8,7	14,1	18,4	24,9
Circuit Protection [A]***	3x6	3x10	3x16	3x20	3x35
Control	Basic, Comfort, Comfort Plus				
Control voltage	230 V				
Steam hose connection [mm]	1x25	1x25	1x25	1x25	1x40
Condensate hose connection [mm]	1x12	1x12	1x12	1x12	1x12
empty weight [kg]	13	13	20	20	22
operating weight [kg]	19	19	38	38	40
dimensions	height [mm]	480	480	650	650
	width [mm]	449	449	520	520
	depth [mm]	215	215	283	283
Water Installation	100 x 10 ³ to 100 x 10 ⁴ pascal with 3/4" connection for external thread				
fan unit**	VG08	VG08	VG17	VG17	VG30
air flow capacity [m³/h]	185	185	185	185	350
* Other voltages on request. ** Not included with delivery. *** Multiply power input by 1.3 after full blow-down. Note overload capacity of automatic breakers. If necessary, select the next higher rating.					

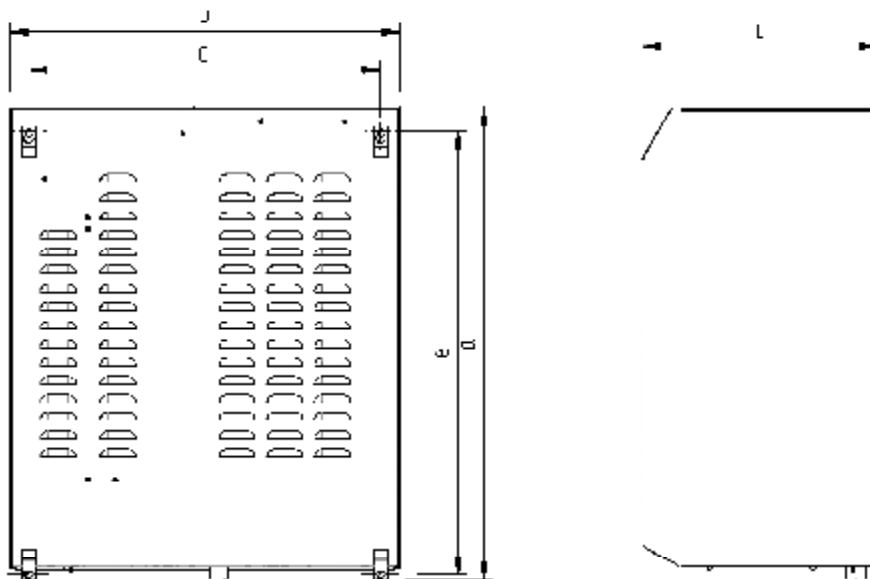
Technical Specifications Steam Humidifier HyLine					
Type	HY30	HY45	HY60	HY90	HY116
Steam output [kg/h]	30	45	60	90	116
Power supply *	400V/3/N/50-60 Hz				
Power Usage [kW]	22,5	33,8	2x22,5	2x33,8	2x43,5
Input [A]	32,5	48,8	2x32,5	2x48,8	2x62,8
Circuit Protection [A]***	3x35	3x63	6x35	6x63	6x63
Control	Basic, Comfort, Comfort Plus				
Control voltage	230 V				
Steam hose connection [mm]	1x40	2x40	2x40	4x40	4x40
Condensate hose connection [mm]	1x12	2x12	2x12	4x12	4x12
empty weight [kg]	28	39	47	70	70
operating weight [kg]	55	85	101	162	162
dimensions	height [mm]	707	785	707	785
	width [mm]	560	650	927	1060
	width [mm]	327	390	336	404
Water Installation	100 x 10 ³ to 100 x 10 ⁴ with 3/4" connection for external thread				
fan unit**	VG30	2xVG30	2xVG30	3xVG30	4xVG30
airflow capacity [m³/h]**	350	2x350	2x350	3x350	4x350
* Other voltages on request. ** Not included with delivery. *** Multiply power input by 1.3 after full blow-down. Note overload capacity of automatic breakers. If necessary, select the next higher rating.					

5.1.2 Unit Dimensions HY05-HY45

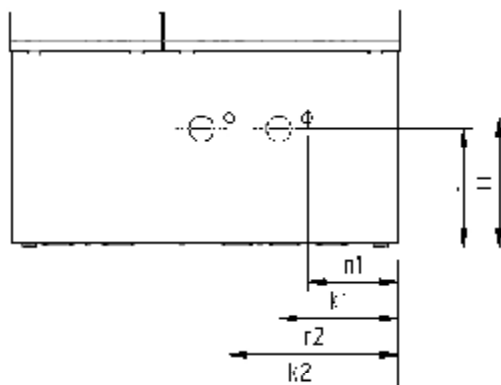
View from below



Rear view



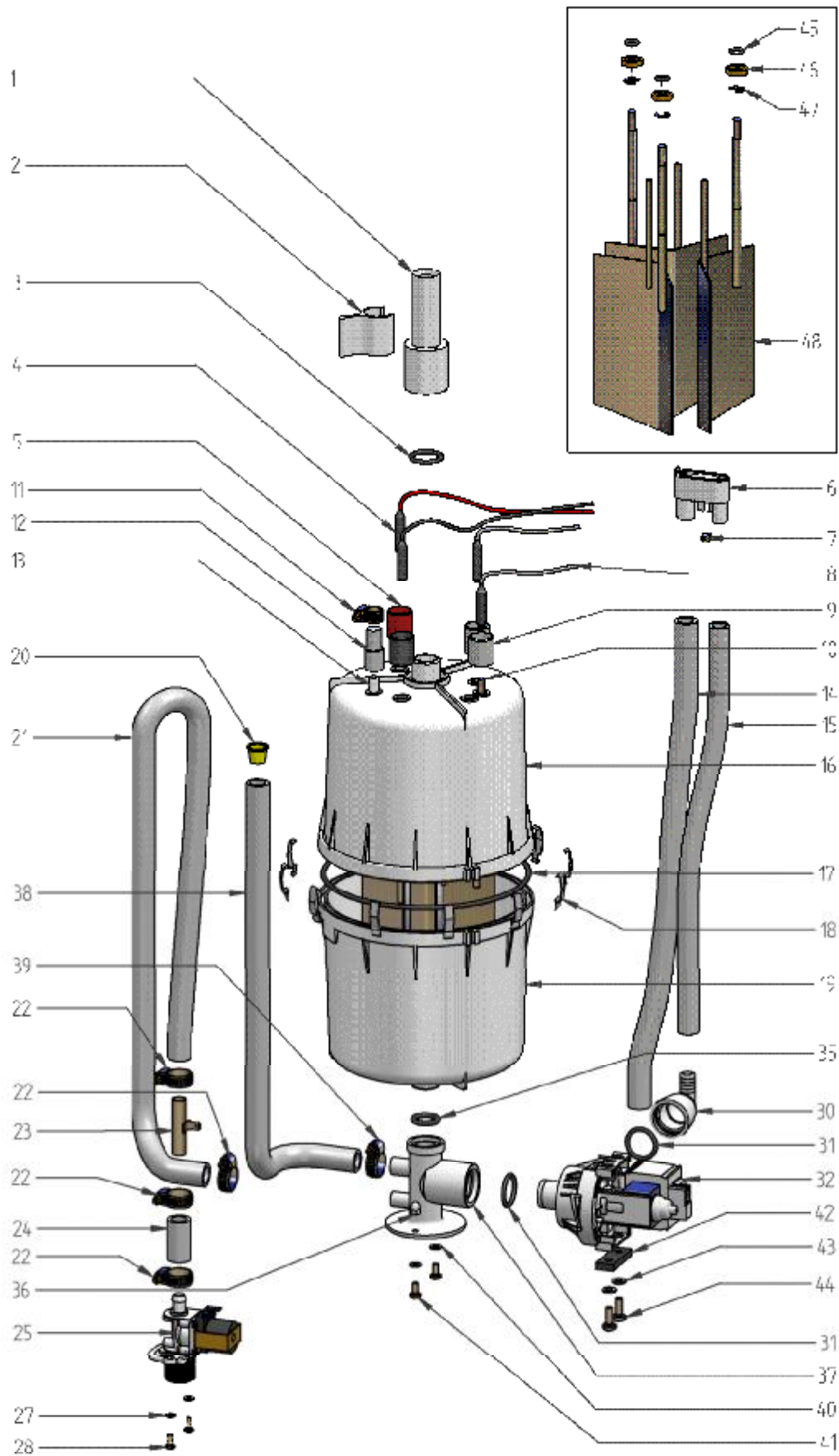
View from top



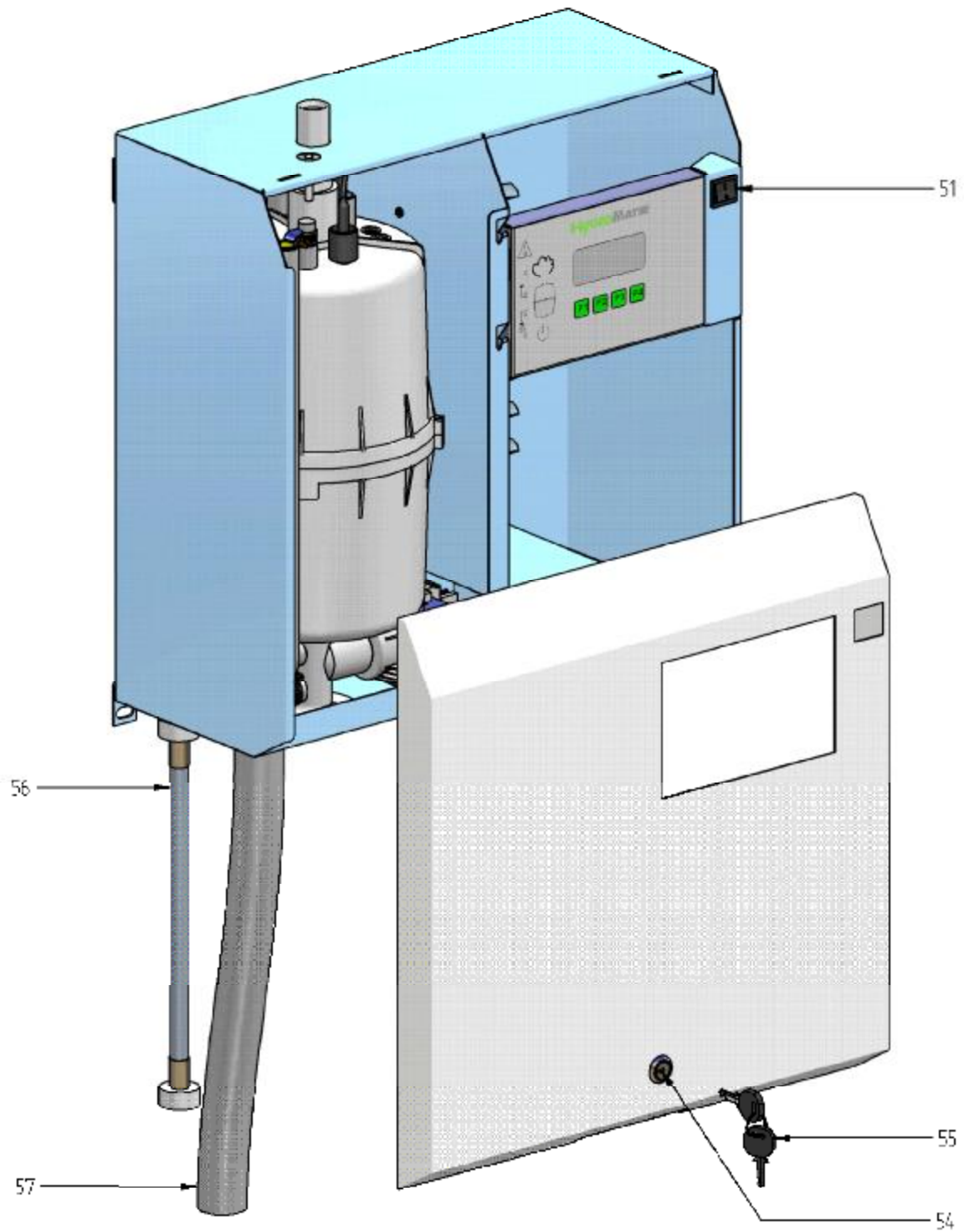
Type / Dimensions	a	b	c	d	e	f	g	h	i	j	k1	k2	m	n1	n2
HY05-HY08	481	449	216	415	438	43	35	35	120	120	103	-	144	78	-
HY13-HY23	654	520	284	486	619	63	35	38	210	152	136	-	184	96	-
HY30	710	560	327	515	665	58	50	38	250	172	156	-	197	106	-
HY45	788	653	394	588	742	58	50	38	300	199	200	330	217	153	283

Specifications in (mm)

14. Exploded View



15. View of housing





HYGROMATIK

Lise-Meitner-Str.3 • D-24558 Henstedt-Ulzburg

Phone +49(0)4193/ 895-0 • Fax -33

eMail hy@hygromatik.de • www.hygromatik.com

A member of the **spirax**
/sarco Group